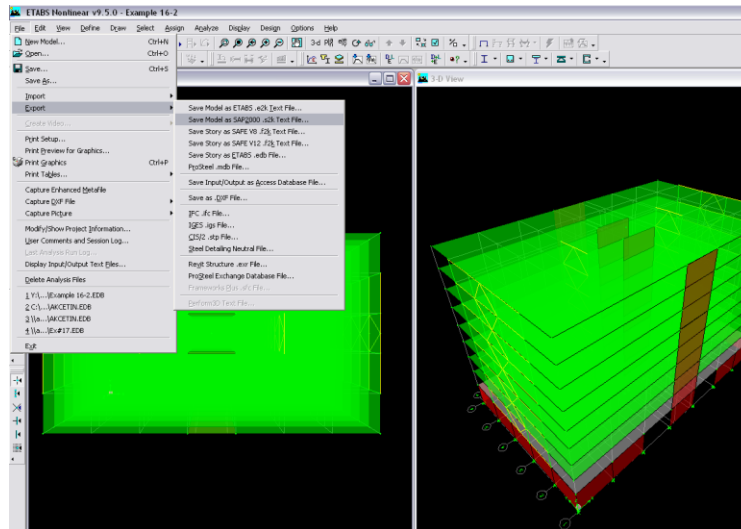


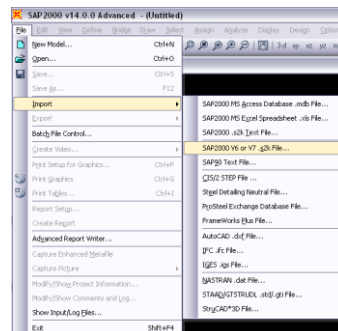
BIM Wiki: Exporting a model from ETABS to SAP2000.

This wiki is a step by step process of how to export a model from ETABS into SAP2000. This is useful because SAP 2000 allows unique non linear members to be modeled, something that ETABS does not allow.

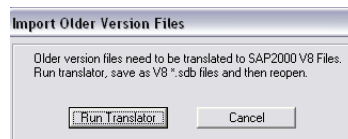
- 1.) Open the file that is going to be exported in ETABS
- 2.) Go to the File/Export/Save Model as SAP2000 .s2k Text File...



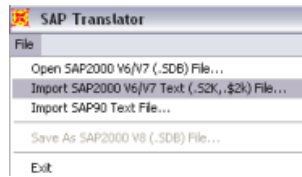
- 3.) Open SAP2000 v14.0.0 Advanced
- 4.) Go to File/Import/SAP2000 V6 or V7 .s2k File...



- 5.) Click "Run Translator"

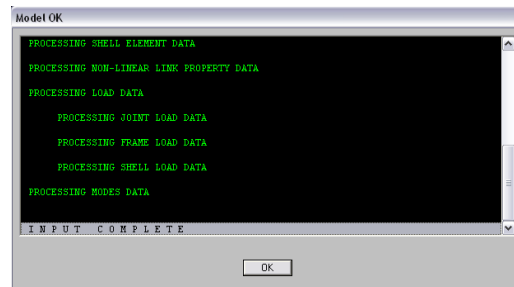


- 6.) You are now in SAP Translator. Go to File/Import/



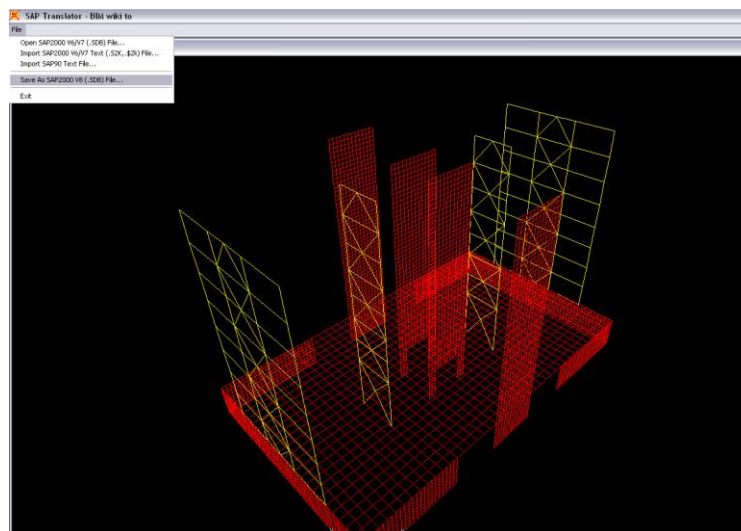
7.) Open the file that was just exported from ETABS. Make sure that you select the **.s2k** file.

8.) What the screen that says input complete select “OK”



9.) Your model will now appear as it was modeled in ETABS but with the rendering that SAP 2000 applies.

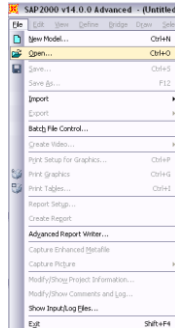
10.) Go to File/Save As/SAP2000 V8 (.SDB) File...



11.) Your file is now saved as a regular SAP file.

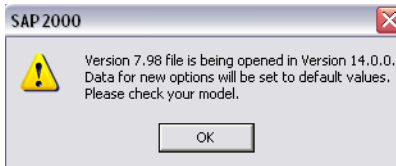
12.) Go back into SAP 2000 v14.0.0 Advanced

13.) Go to File/Open...



14.) Select the file that you have been working with. Make sure you select **.SDB** version.

15.) A warning appears, click "OK"



16.) Additional pop ups may appear. Click ok to them and your model will generate itself within SAP2000.